

We are.
leonard design architects

伦纳德建筑设计

公司简介

我们是伦纳德建筑设计公司

Company Profile
We are Leonard Design Architects

leonard design architects

我们通过倾听和创新辩证的思维方式，从体验出发，打造鼓舞人心、吸引人潮、充满正能量的空间。
We listen, create and articulate to shape inspiring, responsive and experience-led places where people want to be.

我们为客户提供从概念定位到交付使用的设计过程 多方位支持。在全球范围内，我们设计建成的获奖项目从100万英镑到3.5亿英镑不等，其中包括高端定制的商业建筑、大型新建项目、城市综合体再生高定室内设计等。我们一直与开发商、企业家、品牌、基金会、政府和其他相关者合作，创造现代化、激动人心、以人群体验为主导的环境，推动中心城区的更新。

连续位居AJ100榜单 五年

自1995年以来，AJ100每年对英国最大的建筑事务所进行排名。它在很大程度上被视为衡量建筑设计公司成功与否的关键指标，并且是业界最权威的清单。

We support our clients along the collaborative design journey from concept to delivery and beyond. We work globally, regionally and locally. We deliver award-winning projects ranging from £1m to 350m including bespoke commercial units, major new build, mixed-use regeneration and bespoke interior design. We have been helping drive the change in our town centres, working with developers, entrepreneurs, brands, funds, authorities and stakeholders to create modern, exciting, experience-led environments.

Celebrating Five Years in the AJ100

Company Award. Published annually since 1995, the AJ100 ranks the largest architectural practices in the UK. It is largely regarded as a key measure of success and the industry's most authoritative list.



An AJ100 Practice



Years in Practice

15

Offices

05

Countries worked in

30+

公司简介

重要合作伙伴

leonard design architects

Company Profile
A Selection of Clients

我们有幸与世界上一些最杰出和具有远见的客户一起成就梦想。

We are proud to say that we have the privilege to work with some of the most exceptional and forward-thinking companies in the world.

我们与公司、企业、政府、地方当局、各类开发商和知名建筑师深度合作。其中涉及品牌直销中心、零售公园、购物中心和单体建筑等。广泛的设计工作活动，使我们各行各业有深度了解并保证设计引领行业趋势。

我们以对各种规模和复杂程度的项目具有独特的能力和远见卓识感到自豪。更具需求配置多样且知识渊博的设计团队共同应对，以解决每个客户的需求，愿望和目标。

Companies, corporations, governments, local authorities and individuals who own, lease and operate a variety of development types and sizes. These include but are not limited to designer outlets centres, retail parks, shopping malls and individual buildings. Working across this breadth of developments enables us to take insight from one to the other and identify trends.

We pride ourselves in having a unique ability and vision for projects of any size and level of complexity. Responding with an equally diverse and knowledgeable design team to tackle each individual client's needs, aspirations and goals.

 Irish Life


Landsec

BRITISH AIRWAYS 


HYUNDAI



 Nottingham
City Council

Sheffield
City Council


 Leeds
CITY COUNCIL

 Hammerston

LOTTE

Standard Life
Aberdeen

Meyer
Bergman

Westfield

SAMSUNG

 SHINSEGAE



 British
Land

McArthur
Glen
Designer Outlet

 lendlease

CBRE

公司简介

服务门类

Company Profile
Sectors Provided

leonard design architects

伦纳德建筑设计提供一系列设计服务，以满足各种规模的项目需求。

Leonard Design undertakes an array of design services to deliver a wide variety of projects across a range of scales.

卓越的设计是我们的核心，我们将始终努力为客户的多方面需求提供最佳解决方案。我们在城市设计方面，提供从街景、新社区到整个城市的总体规划。建筑设计方面，从大规模到单体开发、城中心综合体到个体房屋，我们拥有跨越多个涉及领域多种多样的，复杂的设计经验。室内设计方面，从精致、豪华、独特到世界上最大、最复杂的内部空间我们都有丰富经验。我们使用各种技能和流程保证项目交付，从手绘草图到Revit和BIM级别的协调。我们的经验满足各种设计需求。

区域规划
城市设计
建筑设计
室内设计
咨询服务
可持续设计

资产价值提升
品牌价值提升
导引设计
标志设计
平面设计

Remarkable design is at our heart and we will always strive to bring the best solutions to our clients multifaceted needs. We deliver master-planning from the streetscape, to new communities, to entire cities. Architecture, from massive to intimate, from mixed-use town centres to one-off houses, our experience is diverse and complex across a vast array of typologies. Interior Design, from the delicate, sumptuous and exclusive to some of the largest and most complex internal spaces in the world. We use a range of skills to deliver our projects from hand sketching to Revit and BIM level coordination. Our experience is as broad as it is varied.

Masterplanning
Urban Design
Architecture
Interior Design
Consultancy
Sustainability

Asset Enhancement
Brand Development
Brand Repositioning
Wayfinding
Signage
Graphic Design



休闲 Leisure



酒店 Hospitality



商业 Retail



交通 Transport



住宅 Residential



办公 Office



综合体 Mixed-use



公司简介

精选门类

Company Profile
Key Sectors

leonard design architects

城市设计。我们在进行城市和城镇中心总体规划时着眼未来，特别是针对生活工作模式和交通方式的变化，用多样性和灵活性保证设计的适用性，并时刻将环境问题作为重要考量。

Plan. Our master-planning covers a wide range of city and town centres all concerned with the future, especially with changes in living and working patterns, transportation, creating variety and flexibility and addressing huge environmental issues.



公司简介

精选门类

Company Profile
Key Sectors

leonard design architects

休闲娱乐建筑设计。我们在全球范围内开展最具前瞻性的购物综合体开发项目。关注城镇的未来，互联网的影响以及如何在减少传统商业面积的情况下创收。

Play. We undertake some of the most forward thinking retail and mixed-use developments around the world, concerned with the future of our towns and cities, the impact of the internet, and how we are reducing the sqm for traditional retail.



公司简介

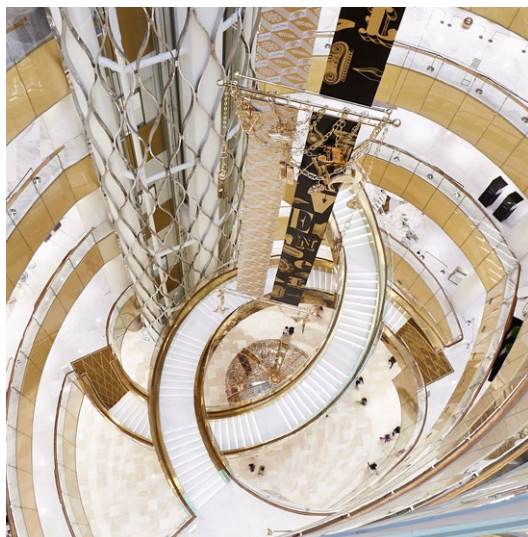
精选门类

Company Profile
Key Sectors

leonard design architects

商业建筑。几十年来，零售商业一直是发达国家和发展中国家经济增长的主要来源之一，也是我们的专业领域之一。

Shop. For decades, the retail industry has been one of the main sources of economic growth both in developed and developing countries, and it is one of our areas of specialism.



公司简介

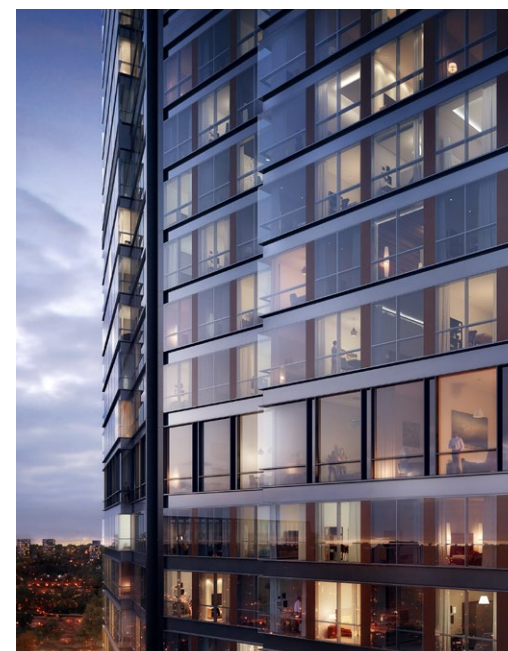
精选门类

Company Profile
Key Sectors

leonard design architects

住宅及酒店建筑设计。 我们有各种规格的住房和酒店设计经验，针对不同类型的开发商而建造和设计，关注打造健康，适宜社交的生活方式。

Live & Hospitality. We have a large variety of housing and hotel projects, both built and being designed for different developer types, concerned with healthy and sociable lifestyles in a range of environments.



公司简介

精选门类

Company Profile
Key Sectors

leonard design architects

办公建筑设计。工作场所的设计随着时代发展快速变化，且必须以员工、人员和环境为重点，强调工作与生活之间的平衡，灵活性及对公共交通的支持。

Work. Workplaces are rapidly changing and must be employee, people and planet focused, with emphasis on work-life balance, flexibility, and supporting public transport.



公司简介

我们开始的地方

Company Profile
Where we started

leonard design architects

董事。 伦纳德建筑设计在国内外工作方面具有丰富的经验，为越来越多的开发商和品牌商提供咨询设计和技术服务。

Directors. We have extensive experience of working at home and overseas, providing consultancy design and technical services to a growing number of developers and clients.



David Leonard



Hin Sim



Ian Staples



John Morgan

公司由大卫于2006年成立，大卫此前曾在西田集团（Westfield）担任欧洲设计主管，还曾在贝诺（Benoy）任董事。公司很快发展壮大，一群在商业和休闲地产设计领域处于领先地位有资深经验、充满活力的董事聚集一起，在全球舞台上建立了公司。

沈光兴之前曾在HKR, Westfield（与大卫一起）和RTKL任职。伊恩于2006年一同协助成立了公司，在西田集团的Stratford City项目的总体规划设计中发挥了重要作用，此后一直致力于向全球主要的商业建筑开发商提供最优质的服务。约翰曾任西田集团的设计总监。

这组经验丰富，享誉国际的董事带领我们的创意团队为全球各个建筑领域提供商业上成功且创新的方案。通过强调经验、创新和热情，团队不断壮大。

通过将这对客户需求有充分了解的团队成功聚集在一起的方式，伦纳德建筑设计在设计和建造项目方面不断提高公司声誉、扩大项目范畴。这也是LDA建筑设计在世界上最严重的经济衰退中依然继续赢得了一些最负盛名全球项目的原因。

伦纳德建筑设计现在具有在国内外工作的丰富经验，为越来越多的开发商和商业客户提供设计咨询和技术服务，并在全球30多个国家/地区工作，涉及中国、印度、非洲、南美、中东东欧和整个欧洲。我们拥有在总体规划、城市综合开发、购物中心、室内设计、休闲和住宅项目中的经验，并与管理和领导本地开发合作伙伴的团队，包括设计师和建筑师以及技术团队深度合作。

这不仅需要出色的设计和技术技能，还需要沟通、协作和领导的能力。这使我们成为了有丰富经验，了解客户的目标，并带领整个团队实现这些目标的主持人。

利用我们的国际经验和创造力，我们结合了多个学科来提供高质量的服务，从而提供具有商业理解力和当地文化敏感性的屡获殊荣的项目。

The company was established in 2006 by **David Leonard**, previously Head of European Design at Westfield and a former Director at Benoy. The company soon grew and a group of senior, dynamic Directors, each at the cutting edge of the retail and leisure sectors, were brought together to establish the company on the global stage. **Hin Sim** was previously at HKR, Westfield (with David) and RTKL. **Ian Staples** helped to set up the practice in 2006, was instrumental in the masterplan design of the Stratford City scheme for Westfield and has since worked on major retail and resort schemes around the world. **John Morgan** was previously Design Director at Westfield.

This group of experienced, internationally recognised, Directors lead our creative teams in delivering commercially successful and innovative schemes across a variety of architectural sectors worldwide. The teams have grown through an emphasis on experience, innovation and enthusiasm. The successful formula of bringing together these teams who have a full understanding of clients' needs, has meant that Leonard Design Architects has continued to grow their reputation and workload, of not only designing but also delivering projects and is the primary reason that Leonard Design Architects have continued to win work on

some of the most prestigious global projects, through one of the world's worst recessions.

Leonard Design Architects now have extensive experience of working at home and overseas, providing consultancy design and technical services to a growing number of developers and retailer clients and have worked in around 30 countries worldwide, spanning China, India, Africa, South America, the Middle East and throughout Europe. Our experience in master planning, urban mixed-use development, shopping centres, interior design, leisure and residential projects, involves managing and leading teams of local development partners, including designers and architects and technical teams.

It requires not only great design and technical skills but also the ability to communicate, arbitrate and lead. This has led us to become very experienced facilitators who understand the client's goal and lead the entire team in achieving these. Using our international experience and creativity, we combine several disciplines to produce high quality services, which deliver award winning schemes with commercial understanding and local cultural sensitivities.

西田购物中心

英国, 伦敦

Westfield London

London, UK

leonard design architects

伦敦商业、餐饮、休闲和奢侈品集一体的综合中心。

这项复杂的城市再生挑战激活了12公顷的冗余市区工业用地，将其转变为充满活力的多功能综合体。作为欧洲最大的市中心购物区，将商店、饭店、电影院、交通枢纽、图书馆、办公室和公寓细致条理地整合到人口稠密的城市环境中。

An amazing project of retail, food, leisure & luxury retail in London.

This complex urban regeneration challenge took 12 hectares of redundant inner-city industrial land and transformed it into a vibrant mixed-use area.

Europe's largest city centre shopping development. Retail units, restaurants, a cinema, transport interchange, library, offices and flats, have been carefully integrated into a densely populated urban setting.

客户 Client

西田集团 Westfield

服务范围 Role

商业、休闲，建筑设计，总体规划

Retail, Leisure, Architecture, Master-Planning



西田购物中心更新

英国, 伦敦

The Future of Westfield London

London, UK

leonard design architects

领先于时代的商业设计。

与西田集团和包括Allies & Morrison在内的专业设计团队合作，对伦敦西田购物中心总体规划和综合体进行扩建更新设计。它将创造额外的500,000平方英尺的商业面积和1500套公寓、酒店、休闲娱乐场所、餐厅和一个新集市。

New generation of retail development.

Master-planning and design of a major mixed use extension to Westfield London in collaboration with Westfield and a specialist design team, including Allies & Morrison.

It will create an additional 500,000sqft of retail plus 1,500 apartments, a hotel, leisure and entertainment venues, restaurants and a new market.



客户 Client

西田集团 Westfield

服务范围 Role

首席建筑师及设计总监

Lead Design Architect & Design Director

斯特拉特福市西田购物中心

英国, 伦敦

leonard design architects

Westfield Stratford City
London, UK

欧洲最大的商业主导的再生项目之一 —— 通往2012年伦敦奥运会场地的大门。

英国举办奥运会的战略核心目标之一便是这个以前在首都被忽略的地区打造一个经久不衰的，环境友好的，设施完备的新城区。

西田中心为斯特拉特福10公顷的土地注入了新鲜的活力，涵盖商店、休闲设施、公寓、酒店，社区设施及交通枢纽，所有这些都由高效的中央供热和发电厂提供服务。

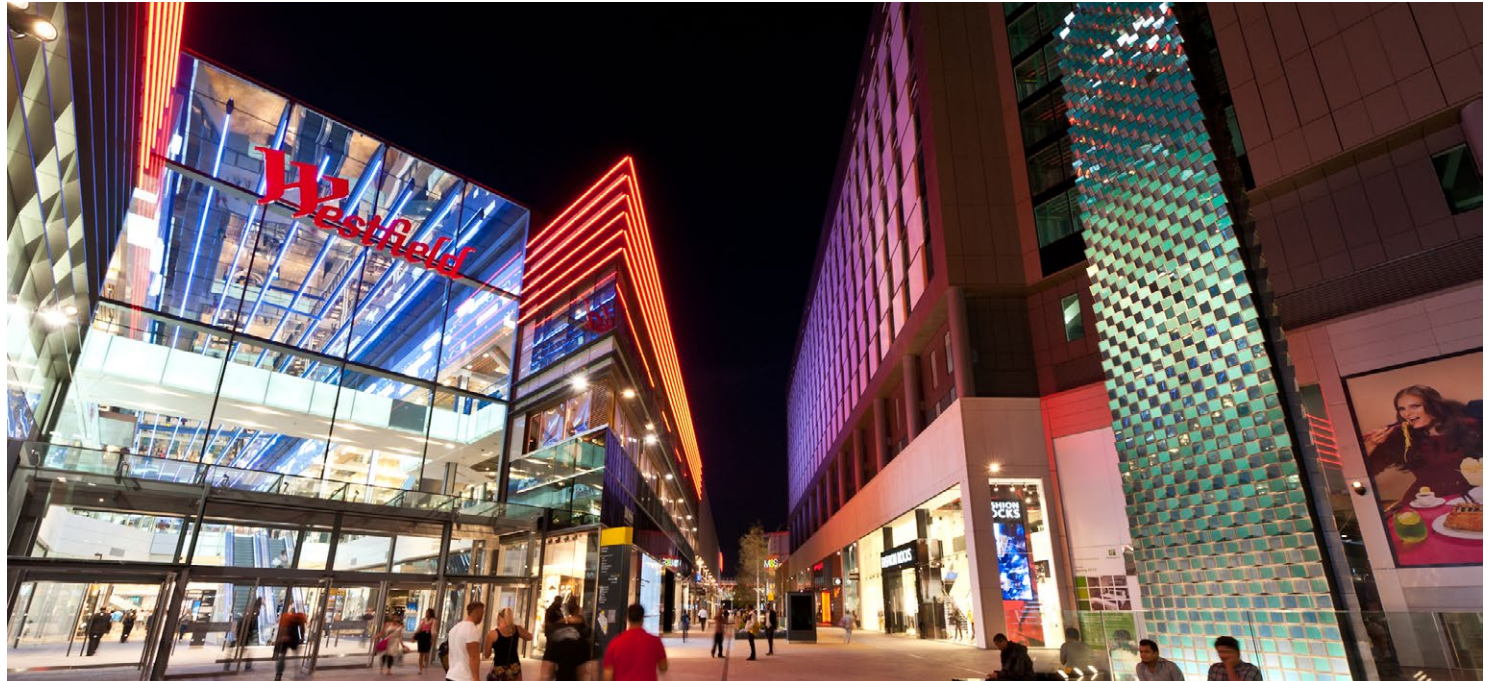
One of Europe's largest retail-led regeneration projects, Stratford City forms the gateway to the 2012 London Olympic site.

At the heart of the UK's strategy was the aim that the games would create a lasting legacy of improved environment, facilities and infrastructure in this formerly neglected part of the capital.

Stratford City breathes new life into 10 hectares of land with shops, leisure facilities, apartments, hotels, community facilities and a transport interchange, all served by an energy-efficient central heat and power plant.

客户 Client
西田集团 Westfield

服务范围 Role
综合体设计，休闲建筑，零售商业，建筑设计总体规划，办公建筑，公共景观，交通，酒店
Mixed-Use, Leisure, Retail, Architecture, Master-Planning, Office, Public Realm, Transport, Hotels



克罗伊登市西田购物中心

英国, 伦敦

Westfield Croydon

London, UK

leonard design architects

伦敦南部的的新首都。

LDA与包括Hawkins Brown, Allies & Morrison 在内的专业设计团队合作完成了这个占地200,000平方米的超大型综合用途开发项目的总体规划。该项目包括商业、公寓、休闲娱乐、餐厅和公共场所，建立穿过市中心的重要的南北和东西向路线。

New Capital of South London.

Leonard Design Architects have completed the planning submission for the masterplan of this major 200,000 sqm mixed use development comprising of retail, apartments, leisure and entertainment, restaurants, and public space, in collaboration with specialist Design teams, including Hawkins Brown and Allies & Morrison, establishing significant north-south and east-west routes through the heart of city centre.

客户 Client

西田集团 Westfield

服务范围 Role

住宅建筑, 零售商业, 建筑设计, 综合体设计, 休闲建筑, 总体规划

Residential, Retail, Architecture, Mixed-Use, Leisure, Master-Planning



城市之心二期-谢菲尔德

英国, 谢菲尔德

leonard design architects

Heart of the City II - Sheffield

Sheffield, UK

城市之心二期旨在基于谢菲尔德地区的独特性进行开发。我们相信这是打造让城市真正引以为傲的城市之心最佳的方式。

该地点位于城市的中心地带，毗邻Fargate、The Moor和Division等主要商业街。该设计利用现有的街道网格将这些不同的街道和关键区域结合在一起。位于进入市区的主要到达路线的汇合处打造Barkers Pool和Sheffield Peace Gardens的标志性公共空间。无论步行、自行车、汽车、公共汽车、电车还是火车，人们都能轻松到达。

Heart of the City II seeks to build on what is uniquely Sheffield. We believe that is the best way to deliver a new heart that the city can be truly proud of.

The site sits within the very heart of the city adjoining the key retail streets of Fargate, The Moor and Division Street. The design will knit together these various streets and key areas and make use of the existing grid of streets (Cambridge, Wellington, Carver, Rockingham, Pinstone and Charles Streets). It is located at the confluence of major arrival routes into the city and celebrates the key iconic public spaces of Barkers Pool and the Sheffield Peace Gardens. It will provide easy access to people whether they arrive on foot, by bike, car, bus, tram, or train.

客户 Client

Queensberry, Sheffield City Council

服务范围 Role

建筑设计，总体规划
Architecture, Master-Planning



萨里码头总体规划IV期

英国, 伦敦

leonard design architects

Surrey Quays Masterplan IV London, UK

伦敦新区的地标性建筑。

其中地块3为不同的家庭提供各种鼓励健康及可持续的生活方式的优质住房。提供多达100套新房屋，涵盖各种类住房类型、使用期限、价格区间和套间大小。将住宅以U型围绕商业街排布，打造区域内真正活跃的街区。地块4中的建筑设计获得文化和休闲中心的竞赛设计大奖。该综合体构成了新的混合用途总体规划的核心。项目位于金丝雀码头的大厦和全球公司总部对面，目前的商业和轻工业用地将被重新开发为高密度办公室和住宅塔楼。地块4的建筑形式具有标志性的轮廓，呼应曾经堆满加拿大水域繁忙码头的木材堆。它将被打造成一个繁忙而繁荣的多层城市核心和目的地。

A landmark for a new quarter of London.

Plot 3: Encouraging healthy, sustainable living with access to a wide range of high quality homes for different life stages. Plot 3 will deliver up to 100 new homes, offering a variety of choice and providing a range of housing types, tenures, price points and sizes. The creation of a lived-in real and active part of the area and uses. The program includes 100 PRS units organized in a U shape configuration sitting in a retail podium.

Plot 4: The Plot 4 Building at Surrey Quays in London is a competition winning design proposal for a culture and leisure centre. The complex forms the heart of a new mixed use master plan. Situated just opposite the towers and global corporate headquarters of Canary Wharf, land currently occupied by retail units and light industry will be redeveloped as high density office and residential towers.

客户 Client

British Land

服务范围 Role

休闲建筑，综合体设计，零售商业，办公建筑，酒店，住宅，娱乐设施

Leisure, Mixed-use, Retail, Office, Hotels, Residential, Entertainment



中山路乐购

中国, 南京

Tesco Nanjing Zhongshan

Nanjing, China

leonard design architects

结合在地环境，提供包括商业计划，概念布局以及室内外设计的详细可行性研究。

伦纳德建筑设计与3DReid合作，为这个100,000平方米的计划提供包括商业计划，概念布局以及室内外设计的详细可行性研究。该项目位于“南浦顶”保护区和“辰南”历史与传统居住区之间的黄金地段。地块以东也是“秦淮河”受保护历史区域的关键部分。设计基于传统的城市结构和街区规模，建筑物的规模，公共空间以及独特的历史建筑打造繁华的商业街区。

A detailed feasibility study with retail planning, concept layout and interior and exterior proposals.

Working in collaboration with 3DReid, LDA provided a detailed feasibility study for this 100,000sqm scheme, with retail planning, concept layout and interior and exterior proposals. The site is at the prime location between the North of the “Nan Pu Ding” protected historical area and “Chen Nan” historical and traditional residential area. Also to the east of the site is the key section of the protected historical area of River “Qin Huai”. The project's design principle is based on the traditional urban fabric and block massing, the scale of buildings, public spaces, and distinctive historical architecture.

客户 Client

Tesco Property

服务范围 Role

商业设计，室内设计

Retail, Interiors



威尼斯港购物中心

西班牙，萨拉戈萨

Puerto Venecia
Zaragoza, Spain

leonard design architects

MAPIC奖获得者-2013年 ‘最佳零售和休闲发展奖

拥有超过200,000平方米的零售和休闲场所，威尼斯港是西班牙最大的发展项目之一，咖啡馆和餐馆排成一条新运河，周围是一个大型人造草坪湖的户外活动区也是最原始的景观之一。

开发商打算通过精心协调的措施计划，在商业成功与环境可持续性之间取得平衡，这些措施包括通过建筑技术的提高和使用可再生能源，种植12000棵树以及注重能源的管理等策略。我们被任命对所有与设计相关的元素进行概述，包括商铺外观、餐饮店铺设计。

MAPIC Awards 2013 – ‘Best Retail & Leisure Development’

With over 200,000 sqm of retail and leisure, Puerto Venecia is one of the largest development projects in Spain but, with cafes and restaurants lining a new canal and an outdoor activity area set around a large artificial lake, it's also one of the most original.

The developer intends to balance commercial success with environmental sustainability through a carefully coordinated programme of measures covering construction techniques, the use of alternative energy supplies, the planting of 12,000 trees and an energy conscious management strategy. We were appointed to take an overview of all design related elements, including shopfronts, food and drink outlets.

客户 Client

British Land Plc & Orion Group

服务范围 Role

设计顾问，室内设计和商业设计建造

Consultancy, Interior Design & Retail Delivery Architects



果酱工厂更新

澳大利亚, 墨尔本

leonard design architects

The Jam Factory Melbourne, Australia

重新打造墨尔本和教堂街的标志。

与BatesSmart合作的果酱工厂是对澳大利亚墨尔本教堂街上现有购物胜地的完整改造。这里是Village Cinemas的所在地，除办公室外，在整个场地中有许多中端购物市场。该遗址具有特殊的历史意义。纽马克（Newmark）的新果酱工厂计划充满活力和前瞻性。在三层商贸和一个地下目标集市空间之上，将是六个新办公大楼，以容纳目前在南亚拉（South Yarra）寻租的一系列公司。VillageCinemas将在现代化的现代化设施中拥有一个新家，以重新振兴其品牌。果酱工厂为您带来独特的零售体验，并极大地增强了南亚拉（SouthYarra）的购物活力和非凡的都市性。所有图片均由BatesSmart提供。

Re-invention of a Melbourne & Chapel Street Icon.

Developed in collaboration with Bates Smart, the Jam Factory is a complete re-build of an existing retail destination on Chapel Street in Melbourne, Australia. Currently the site is the home of Village Cinemas and has a variety of mid-market retail anchors throughout alongside office spaces. The site is of exceptional historic importance. Newmark's plans for the new Jam Factory are energetic and forward thinking. Atop three levels of retail plus a basement destination market space, will be six new office blocks accommodating a range of potential companies currently seeking office space in South Yarra. Village Cinemas will have a new home in a modern, state-of-the-art facility, re-invigorating their brand. Jam Factory will be a unique retail experience, and massively enhance the shopping dynamic and the exceptional urbanity of South Yarra. All images courtesy of Bates Smart.

客户 Client

Newmark

服务范围 Role

零售商业, 休闲建筑, 办公, 公共景观, 建筑设计
Retail, Leisure, Office, Public Realm, Architecture



EC博韦斯

波兰, 华沙

EC Powisle
Warsaw, Poland

leonard design architects

对历史建筑的谨慎再利用，创建一个独特而充满活力的商业目的地。

我们对距文化科学宫和哥白尼科学中心不远的华沙文化区内的综合开发项目进行了总体规划了。其中包括五栋历史建筑经过改建与新建筑交织在一起，成功完成了该工业用地的再开发。铺装的街道为穿越的人群提供了重要人行通道，设有遮阳棚的餐饮座位在新旧建筑之间建立了融洽的联系。同时，我们对顶层标志性美容厅、世界食品厅、有机市场、本地设计师商场和小型商店进行了室内设计。该设计通过构筑许多原始细节来庆祝历史悠久的工业环境。新的建筑元素在适当创新的同时也从旧的设计中汲取灵感。

The sensitive reuse of historic architecture to create a unique and vibrant commercial destination.

A mixed-use development set within the cultural district of Warsaw, a short distance from both the Palace of Culture and Science, and the Copernicus Science Centre. We masterplanned the scheme which consists of five sensitively adapted historic buildings interwoven with many new buildings which complete the redevelopment of this industrial site. Glazed streets provide important routes through the site, sheltered F&B seating and a sympathetic connection between old and new architecture. Our interior design incorporates a top floor signature beauty hall, a world food hall, a biomarket, a local designer arcade and small format retail units. The design celebrates the historic industrial context by framing many of its original details. New architectural elements take inspiration from the old whilst being careful to remain distinct from it.

客户 Client

White Star Real Estate & Tristan Capital Partners

服务范围 Role

总体规划，综合体，零售商业，室内设计
Master planning, Mixed use, Retail, Interior



千禧穹顶更新

英国，格林威治半岛

leonard design architects

The Future of The O2 Greenwich Peninsula, UK

O2已从对新千年的庆祝活动转变为全球领先的全球娱乐场所。

随着Icon奥特莱斯的发展，O2也将成为伦敦的主要购物目的地之一。这种转变是在格林威治半岛不断发展的背景下发生的。

AEG及其合作伙伴请LDA建筑设计评估当前的内部娱乐区，并制定重新开发计划，以考虑并响应半岛和O2的当前和未来发展。在现有穹顶下加入Icon奥特莱斯、O2舞台、Cineworld影院和Brooklyn Bowl演艺场将其打造为一个餐饮和休闲的目的地。

The O2 has transformed from a built celebration of the new millennium into the world's leading global entertainment venue.

With the development of the Icon Outlet The O2 will also become one of London's premier retail destinations. This transformation has happened within the context of ever increasing development of the Greenwich Peninsula.

AEG and their joint venture partners asked Leonard Design to evaluate the current internal entertainment district and establish redevelopment proposals which consider and respond to current and future development of the peninsula and The O2. The redevelopment will establish a dining and leisure offer which compliments/ supports Icon Outlet, The O2 Arena, Cineworld and Brooklyn Bowl, whilst becoming a destination in its own right.

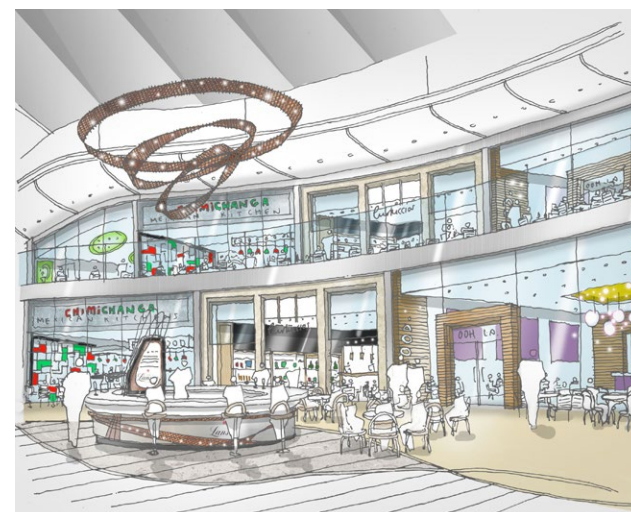
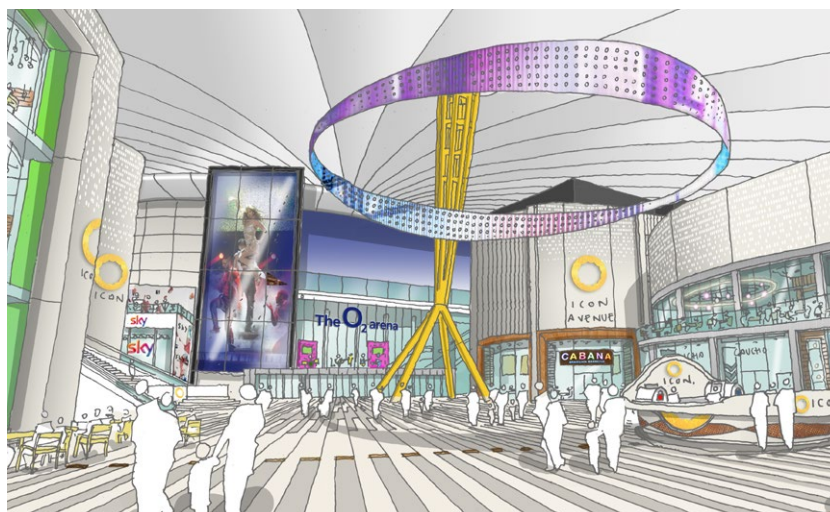
客户 Client

AEG & Crosstree

服务范围 Role

总建筑师

Lead Architects



西码头综合开发

英国, 普尔

West Quay

Poole, UK

leonard design architects

分布在9个具有独特建筑风格的街区中的 459个套间。

West Quay住宅项目，共有459个套间，分布在9个具有独特建筑风格的街区中，反映了历史悠久的现代普尔。人们非常重视在街道上激活公共领域，并将私人住宅与公共空间巧妙地融合在一起。一个新的普尔业余划船俱乐部已被整合到该项目中，不仅为当地社区服务，还为普尔最古老的体育机构树立了榜样。

A residential-led scheme with 459 units spread across 9 blocks of distinctive architectural style.

West Quay is a residential-led scheme with 459 units spread across 9 blocks of distinctive architectural style, reflecting historic and modern Poole. There is a strong focus on activating the public realm at street level and the delicate fusion of private residential living with public spaces. A new Poole Amateur Rowing Club has been integrated into the scheme to not only serve the local community but to also create prominence for Poole's oldest sporting institution

客户 Client

Reuben & Morgan

服务范围 Role

综合体设计，住宅设计，零售商业，公共景观，邻水建筑，海滨建筑，养老建筑，总体规划，办公空间，划船俱乐部
Mixed-use, Residential, Retail, Public realm, Waterfront, Retirement living, Master-Planning



水畔公寓

英国, 诺丁汉

leonard design architects

The Waterside Apartments Nottingham, UK

地标住宅。

伦纳德建筑设计受邀提出一个涉及对位于特伦特河重要位置的现有标志性建筑的再利用概念。除了对现有建筑物进行改造之外，还引入了两座新建的住宅塔楼（南北）和豪华顶层复式公寓。

客户委托伦纳德建筑设计完成RIBA 1-4阶段，并于2018年5月获得规划批准，随后发布了招标图纸，于2018年10月成功将建筑合同授予了JA Ball。伦纳德建筑设计也已签约为所有公寓和公共区域提供室内设计概念的布局和装饰。该项目正在按计划建造，预计于2019年完成。

Residential development

Leonard Design were approached to progress and develop a concept which involved the reuse of an existing iconic building situated in a prominent location on the River Trent. In addition to the conversion of the existing building, the scheme also introduced two new build residential towers (North & South) and duplex luxury penthouses.

Leonard Design were engaged by the client to deliver RIBA stages 1-4, planning was secured in May 2018, followed by the issue of tender drawings and subsequent successful award of the building contract to JA Ball in October 2018. Leonard Design were also signed up to deliver interior design concept layouts & finishes for all apartment types & communal areas. The build is on programme and due for completion in 2019.

客户 Client

JA Ball

服务范围 Role

住宅设计，室内设计
Residential, Interiors



百特格林

英国, 诺丁汉

Baxter Green
Nottingham, UK

leonard design architects

囊括了现有大学建筑翻新的项目，设置在二级保护建筑中的45个住宅单位。

伦纳德建筑设计建筑师被任命在保护建筑群中设计崭新的住宅项目。百特格林包括十五套公寓、七间三卧房、六间四卧房和十二间五卧房。所有这些都环绕着秀丽的景色，与现有建筑物相得益彰，为居住者提供了充分的休闲空间。

45 residential properties set in a Grade II listed setting with refurbishment of the existing college building.

Leonard Design Architects were appointed to create a residential development within a listed building setting. The Baxter Green scheme consists of fifteen apartments, seven 3 bedroom houses, six 4 bedroom houses and twelve 5 bedroom houses. All of which surround a landscaped setting which compliments the existing buildings and provides recreation space for the occupants.

客户 Client

St Johns College and Private Residential Developer

服务范围 Role

住宅设计

Residential



卡文迪许办公综合楼

英国，谢菲尔德

Cavendish
Sheffield, UK

leonard design architects

一家大型金融机构在谢菲尔德市中心的现代办公大楼。

设计满足英国大型金融机构作为主要承租人的办公需求。在保证良好的自然采光同时，提供四层150,000平方英尺配套齐全的现代化办公空间。办公楼位于城市现有的商业办公中心，位置优越。通过沿街零售和休闲娱乐来激活底层空间。设置地下服务区 and 有限的路边停车位。

Contemporary city centre office building in Sheffield with a large financial institution as anchor tenant.

The main elements of the project brief derive from the requirements of a large UK financial institution, who will be the main occupier of the office space. The development provides 150,000 sq ft of modern office space with ancillary functions across four office floor plates, with good levels of natural daylight. Located close to the existing commercial office core of the city, the main entrance is well positioned on a key city street intersection; with the remainder of the street frontage being activated through retail and leisure uses. Servicing is via a dedicated basement service area with limited off-street car parking for office users.

客户 Client
Sheffield City Council

服务范围 Role
办公空间，办公楼，综合楼，商业零售
Workplace, Office, Mixed Use, Retail



比约维卡总体规划

挪威, 奥斯陆

Bispevika

Bjørsvika, Oslo, Norway

leonard design architects

打造世界上最有吸引力，最活跃的地面层活动区。

在水边打造一个专注地面层活动的新城市，与不同的地块建筑师和景观设计师紧密合作，以创造积极的地面体验的活跃新的水滨开发项目，促进商业和休闲活动。

Creating the most attractive and active ground level in the world.

Creating a new city on the water side and focusing on the ground plain. Collaborating with different plot architects and landscape architects to create active ground experience and enlivening the new waterside development and promoting retail and leisure activities.



客户 Client

Oslo S Utvikling AS (OSU)

服务范围 Role

总体规划，零售商业，综合体设计，办公建筑，休闲建筑
Masterplanning, Retail, Mixed-use, Office, Residential, Leisure

白沙罗城

马来西亚, 吉隆坡

Damansara
Kuala Lumpur, Malaysia

leonard design architects

位于巴生谷最独特的社区的豪华山顶综合开发项目。

白沙罗是位于吉隆坡最富裕的地区之一Damansara Heights占地500,000平方米的高端开发项目。白沙罗市中心 (DTC) 是一个高端豪华开发项目, 结合了三座50层的豪华住宅塔楼和11座高级办公楼。这些精美的建筑坐落在优美的景观平台上, 该平台上有以宽敞, 开放的布局布置的100个顶级品牌商店和餐厅。

High-end luxurious and prestigious mixed-use project located in one of the most exclusive neighborhoods in the Klang Valley positioned high up on the hills.

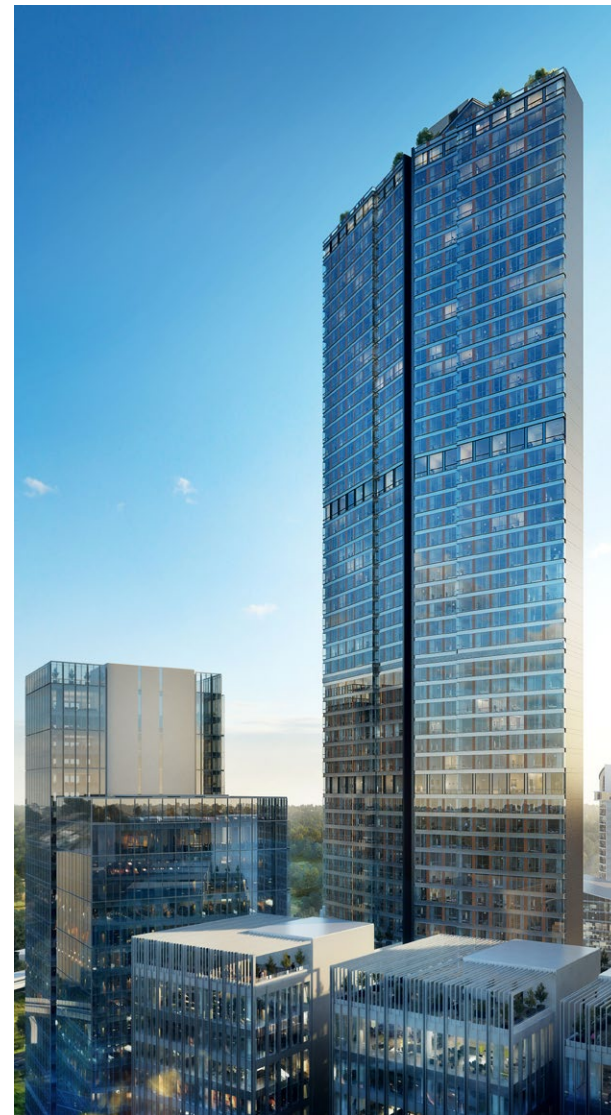
Damansara Heights is a 500,000 sqm prestige development located in Damansara Heights, one of the most affluent locations in Kuala Lumpur. Damansara Town Centre (DTC) is a high-end luxury development combining three 50 story deluxe residential towers and eleven premium office buildings. These addresses are set on top of a gracious landscaped podium, which has a collection of 100 top brand shops and restaurants, arranged in a generous and open layout.

客户 Client
Pavilion

服务范围 Role

建筑设计, 室内设计, 综合体, 住宅, 零售商业, 办公空间, 公共景观, 总体基础设施建设规划

Architecture, Interior, Mixed-use, Residential, Retail, Office, Public Realm, Master-Planning



敦拉萨国际贸易中心

马来西亚, 吉隆坡

Tun Razak Exchange (TRX)

Kuala Lumpur, Malaysia

leonard design architects

空中花园，至高之地。

伦纳德建筑设计受邀为一个10公顷的综合商业架高公园进行商业酒店规划以及概念设计工作。该地点位于传统城市核心和商业区的东南部，周围是主要交通干道。开发的目的是致力于创建一个以集成为中心概念的，有机且充满活力的金融中心。

Park in the sky. A rooftop destination.

Leonard Design were appointed to undertake the retail and hotel planning and concept work for this mixed use development with the retail sitting under a 10 hectare elevated park. The site is located to the South East of the traditional city core and commercial district and is surrounded by large thoroughfares. The goal of the development is to create a living breathing 'organic' financial centre defined by the overarching concept of integration.

客户 Client

Lendlease

服务范围 Role

零售商业，休闲建筑，酒店，住宅，综合体设计
Retail, Leisure, Hospitality, Residential, Mixed-Use



Jayang商业办公创新一区规划 韩国首尔

马来西亚, 吉隆坡

leonard design architects

Development Business in Jayang 1 Renewal Promotion District)
Seoul, South Korea

韩国首尔市中心涵盖高端住宅，当地市政办公大楼，服务式公寓，酒店，商场，文化设施和电影院的城市更新项目。确保24小时的购物和休闲体验的先进的KT技术和城市综合购物中心。裙楼上共有7个塔楼，包括49层酒店，还有3个高层住宅楼。

Urban regeneration project with high-end residentials, local municipal office building, service resident, hotel, retail, cultural facility and cinema in heart of Seoul Korea. State of art KT technology with urban multi-shopping mall will secure 24 hours of shopping and leisure experiences. Total 7 tower block including 49 floors hotel, 3 high-rise residential blocks on the retail podium.

客户 Client
KT Estate(NCP)

服务范围 Role
零售商业，休闲建筑，酒店，住宅，综合体设计
Retail, Leisure, Hospitality, Residential, Mixed-Use



Parc 1大楼

韩国，首尔

Parc 1
Seoul, South Korea

leonard design architects

借助顶层“花园”创造理念非凡的零售中心，人们于此相聚，休憩，体验。

这个杰出的项目位于韩国首都汝矣岛地区。办公楼和酒店空间的三座塔楼环绕着一个六层的购物中心，该购物中心将300家商店和餐馆聚集在一系列引人注目的全高心房周围，可以随时使用城市的交通系统。

在一种非常注重社交活动的文化中，我们已经超越了零售中心的常规概念，在屋顶层创建了一个“竹花园”，家庭可以在此聚集和放松。

Creating a beyond the normal concept of a retail centre with 'the garden' at the top level where people can gather, relax, and experience.

This stunning development is located in the Yeouido area of South Korea's capital. Three towers of office and hotel space ring a six-level shopping centre, where 300 stores and restaurants are grouped around a series of dramatic, full-height atria, with ready access to the city's transport system.

In a culture where shopping is very much a social activity, we have moved beyond the normal concept of a retail centre, creating 'the garden' at the top level where couples, friends, and families can gather, communicate, experience and relax.

Photographs by Kyung Roh

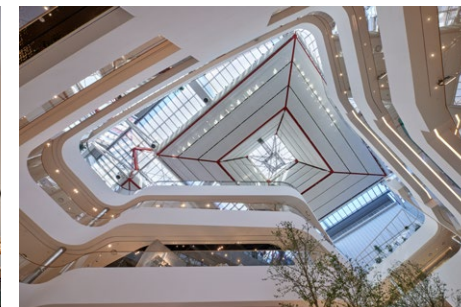
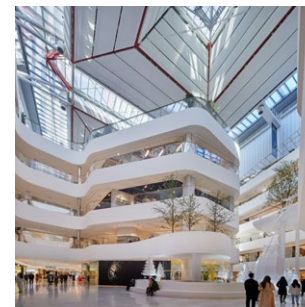
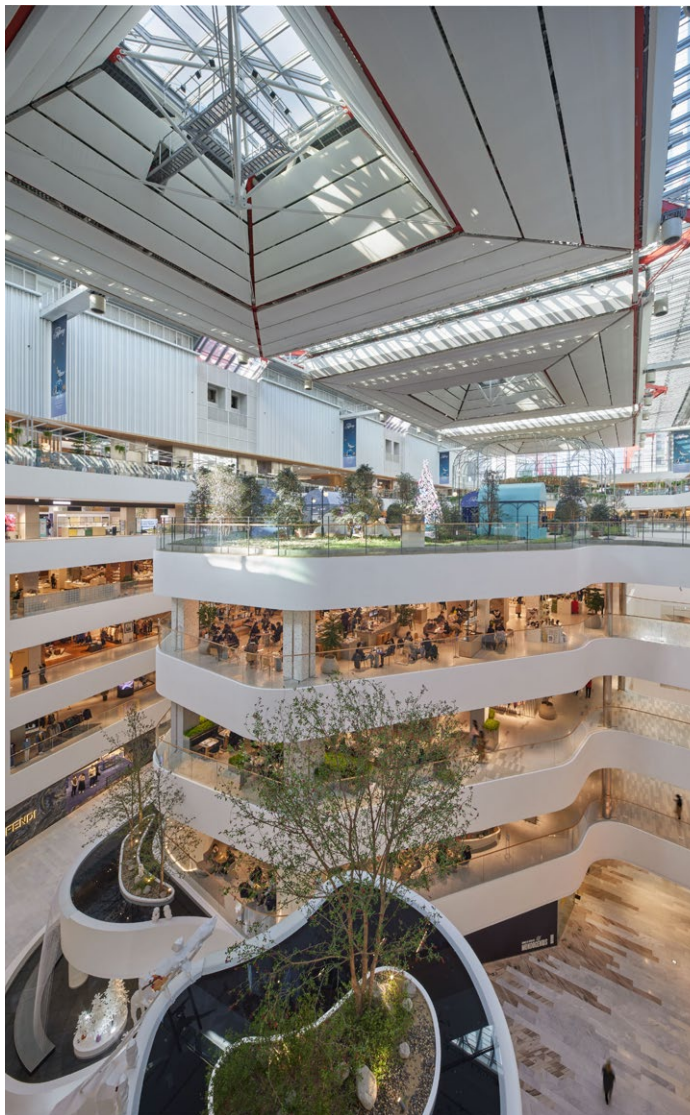
客户 Client

Skyland Developments

服务范围 Role

住宅设计，休闲建筑，酒店，学校，零售商业，总体规划，建筑设计

Residential, Leisure, Hotel, School, Retail, Master-planning, Architecture



奢华大道

韩国, 首尔

Luxury Avenuel
Seoul, South Korea

leonard design architects

对韩国最大的奢侈品百货商店的进行现代化和优雅流畅的重新定义。

作为韩国最大的致力于高档奢侈品的百货商店, Avenuel是引领全球时尚和文化的枢纽, 也是引领奢侈品购物和时尚潮流的地方。LDA建筑设计创造了25000平方米的内部空间, 使客户对购物旅程印象深刻。整个旅程包括7层高的中庭, 穿过装饰精美的购物中心、特许大厅、店面、电梯大厅、洗手间和停车场。我们的设计将Avenuel重塑为一个年轻且现代的零售商场, 同时保留了以前Avenuel概念的超豪华感。随着项目的发展以及与韩国最大零售商之一的关系, 我们的业务范围得到扩展, 以帮助最终确定建筑物外墙的设计和材料。

A modern, elegant and flowing redefinition of Korea's largest luxury goods department store.

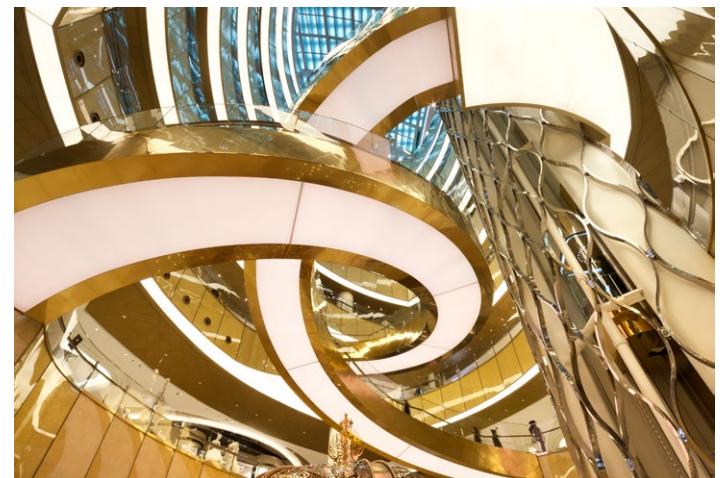
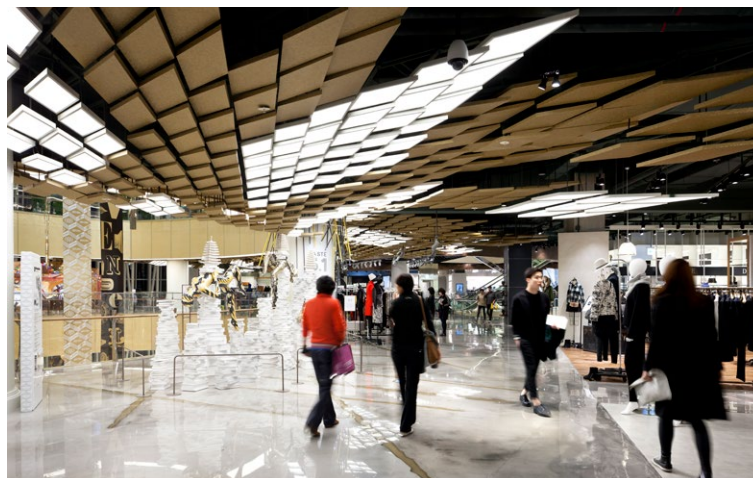
As Korea's largest department store dedicated to top-shelf luxury goods, Avenuel is a hub for leading global fashion and culture and a place that sets trends in luxury shopping and fashion. Leonard Design have created 25,000 sqm of landlord controlled interior space which forms the customer journey. This journey includes seven storey atrium and passes through richly finished malls, concession halls, shop-fronts, lift lobbies, washrooms and car parks. Our design reinvents Avenuel as a young, contemporary, modern retail emporium whilst retaining the super luxurious feel of previous Avenuel concepts. As the project developed, and our relationship with Lotte grew, our scope was extended to help finalise the design and materiality of the building's façades.

客户 Client

Lotte Shopping

服务范围 Role

商业设计, 室内设计
Retail, Interiors



宗公洞免税店

韩国, 首尔

Sogong-dong Duty Free

Seoul, South Korea

leonard design architects

旅游手册上的打卡景点

伦纳德建筑设计受邀在韩国首尔市崇公洞附近打造4层高的机场外免税店。现代、开放的销售厅代替了陈旧狭小空间，最大程度地提高了空间通透性和人行动线。销售厅的独特设计体现着“高雅奢华”(针对国际/本地旅行者)或“时髦精致”(针对中国旅行团)。这种设计使消费者的旅程充满新鲜感，且更易定位。顶层美妆区设置，吸引人们穿过各个楼层，利用现有的桶形拱形中庭。打造标志性空间，是游客行程中的打卡热点。

An iconic retail stop on any tourist's itinerary.

Leonard Design Architects were asked to reconsider 'Out of airport' duty free licenses in South Korea, 4 storey, store in the Sogong-dong neighbourhood of Seoul. Our design clears away dated, cellular spaces and replaces them with contemporary, open concession halls which maximise visibility and encourage circulation to all the retail on offer. Each concession hall has a unique design which contributes to the 'elegant luxury' concept (targeted at the independent international/local traveler), or the 'trendy sophistication' concept (aimed at Chinese tour groups). This variation animates the customer journey and aids intuitive orientation. We relocated the beauty offer to the top floor to draw people up through the levels and take advantage of an existing barrel-vaulted atrium. The 'Beauty Atrium' is the scheme's signature space, an iconic retail stop on any tourist's itinerary.

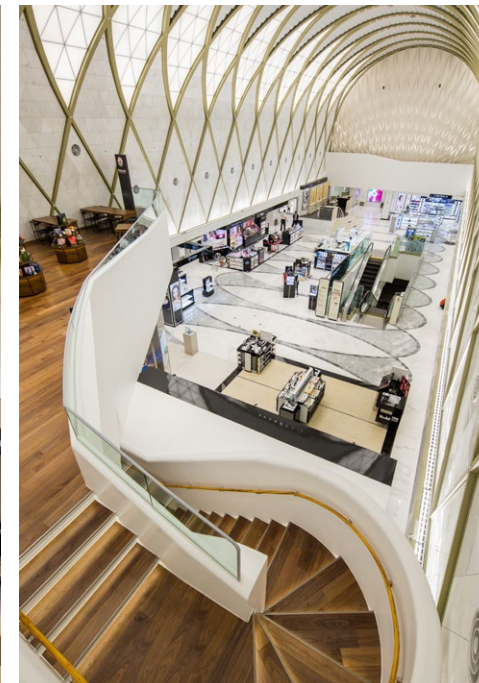
客户 Client

Lotte Duty Free

服务范围 Role

商业设计, 室内设计

Retail, Interiors



www.leonard.design

China@leonard.design

Nottingham UK

Albion House
5-13 Canal Street
Nottingham
NG1 7EG

+44 (0) 115 945 0080

London UK

Baird House
15-17 St Cross Street
London
EC1N 8UW

+44 (0) 207 440 9960

Berlin

2nd Floor
Charlottenstraße 62
10117 Berlin
Germany

Kuala Lumpur

Unit 11-01A
Vida Bukit Ceylon
Jalan Ceylon
50200 Kuala Lumpur

+60 (0)3 2022 2105

Sydney

Level 1, 60 Miller St
North Sydney
NSW 2060

+61 (0) 498 323 080
